

SWAGE STEM BALL

316 STAINLESS STEEL



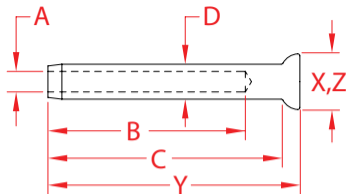
Import



Drop
Forged



Precision
Machined



ITEM	A (wire)	B	C	D BEFORE (swage)	D AFTER (swage)	X (height)	Y (length)	Z (width)	WT (lb)	PACKAGING TYPE	EACH (qty)	INNER (qty)	CARTON (qty)	UPC
S0740-0003	1/8"	1.54"	2.08"	0.25"	0.22"	0.51"	2.26"	0.51"	0.03	POLYBAG	1	50	500	791506050162
S0740-0004	5/32"	1.77"	2.52"	0.30"	0.25"	0.61"	2.73"	0.61"	0.05	POLYBAG	1	50	500	791506050179
S0740-0005	3/16"	2.00"	2.81"	0.36"	0.31"	0.73"	3.05"	0.73"	0.08	POLYBAG	1	50	200	791506050186
S0740-0007	1/4"	2.53"	3.31"	0.49"	0.44"	0.78"	3.55"	0.78"	0.16	POLYBAG	1	25	200	791506050193
S0740-0009	5/16"	3.25"	4.23"	0.64"	0.56"	1.00"	4.57"	1.00"	0.35	POLYBAG	1	25	100	791506050209
S0740-0010	3/8"	3.48"	4.69"	0.70"	0.63"	1.06"	5.11"	1.06"	0.46	POLYBAG	1	25	75	791506050216

NOTE:
ALL DIMENSIONS ARE NOMINAL (+/- 3%) AND ARE SUBJECT TO CHANGE WITHOUT NOTICE.